






Vented animal cabinet

A-Box



Model	A-Box 80	A-Box 120	A-Box 160
Internal dimensions (W x D x H), mm	690 x 500 x 1 200	1 050 x 500 x 1 200	1 380 x 500 x 1 200
External dimensions (W x D x H), mm	900 x 600 x 1 785	1 270 x 600 x 1 785	1 600 x 600 x 1 785
Weight	140 kg	170 kg	190 kg
Capacity for "Type 1" cages (332 x 150 x 130 mm)	16	24	32
Capacity for "Type 2" cages (267 x 207 x 140 mm)	12	16	24
Capacity for "Type 3" cages (425 x 266 x 180 mm)	8	8	16
Capacity for "Type 4" cages (590 x 385 x 200 mm)	4	-	8
View			
Power consumption	300 W	300 W	300 W
Power consumption max (equipped with the heating option)	800 W	1 300 W	1 300 W
Voltage - frequency	230 V-50 Hz		



Noroit is committed to eco-design and production:



- Low energy building production plant,
- Recycling of 95% of production waste,
- Collecting and treatment of 100% of chemical waste (Noroit is member of the « Click Eco » network,),
- Local subcontracting,

Noroit

13 rue des Coteaux de Grand Lieu - 44830 Bouaye - FRANCE

Tel: 0033 / 240 501 277 - contact@noroitlabo.com

www.noroitlabo.com



A-Box

OPEN THE DOOR TO MOUSE PROTECTION!

The vented animal cabinet ensures a HEPA filtered air renewal inside the chamber and thus creates a controlled environment for rodents breeding. The A-Box is a very versatile equipment which can be widely configured to suit your needs.



Optimal protection of the animals, the user and the environment

H14 filtration,
G3 prefilter is installed to avoid a fast clogging of the filter,
Visual alarms.

Functioning

Positive pressure cabinet:
Specific pathogen free sanitary status, nude mice...

Negative pressure cabinet:
Contaminated animals, infected with pathogen germs.

Configuration according to your needs

Adaptation, customisation,
Many possible options on request.

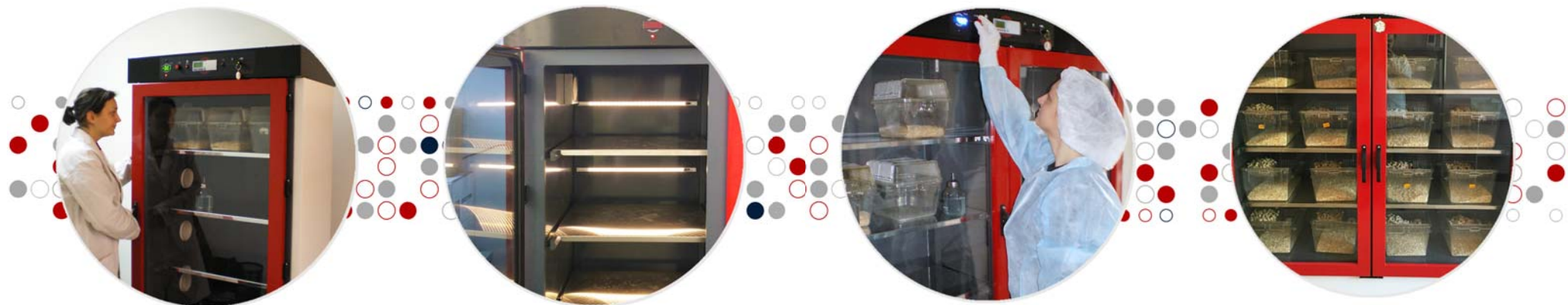
Contact us!



3 DIMENSIONS : 80 CM, 120 CM AND 160 CM



TO MEET YOUR NEEDS AND
TO FIT THE AVAILABLE SPACE
IN YOUR LABORATORY



CUSTOMISATION

- Castors,
- Night and day cycle,
- Dimmable lighting,
- Heating,
- Hygrometry display,
- Carbon filter.

NIGHT AND DAY CYCLE

- Up to 24 programmable on-off cycles available,
- No data loss in case of power failure,
- Leds strip, for each shelf illuminating white (day) or red (night),
- Equipped with one-way mirror doors (red colour).

HEATING

- The set value can span from ambient to 30 °C,
- Both set and measured values are displayed,
- All you need to do is to enter the temperature set; the electronics will automatically control the regulation.

QUALIFICATION

- Control of the efficiency of the embedded filter,
- Control of the ventilation and monitoring of the control system,
- Alarms triggering test,
- Pressure control,
- Mechanical control.

TECHNICAL SPECIFICATIONS

One-piece PVC chamber

This reduces the noise while manipulating the cages, and reduces the stress for the housed rodents.

Stainless steel shelves, removable and autoclavable

For a fast and efficient cleaning.

Transparent PMMA doors, equipped with a peripheral seal

For a clear working area which enables you to monitor your rodents.

Ventilation system is installed at the bottom of the unit

Easy manipulation of the cages, including those stored on the first bottom shelf.

Eye level keyboard

For an easy control of the cabinet.

Programming the unit via the graphic display is very user-friendly,

No data loss in case of power failure.

Carbon filter

Ensures an odour free functioning.

